

# GFIE index June 2011

## Comments from Mr. Pierre-Jean ALBRIEUX, President of the GFIE :

- As the saying goes, even trees do not grow to the sky. The month of July is disappointing and signals a pause in the current increase of the turnover. The Book Bill is also decreasing.
  - The first half of the year was very good and there are many projects in progress.
  - The “Fukushima effect” was relatively limited. Moreover, the Japanese have achieved a great deal of effort to restart the production of wafers and other components which will limit production outage.
  - We will definitely get a “holiday effect” but thanks to the portfolios that are already gathered in, we should go through the summer break serenely.
- Have a nice summer.

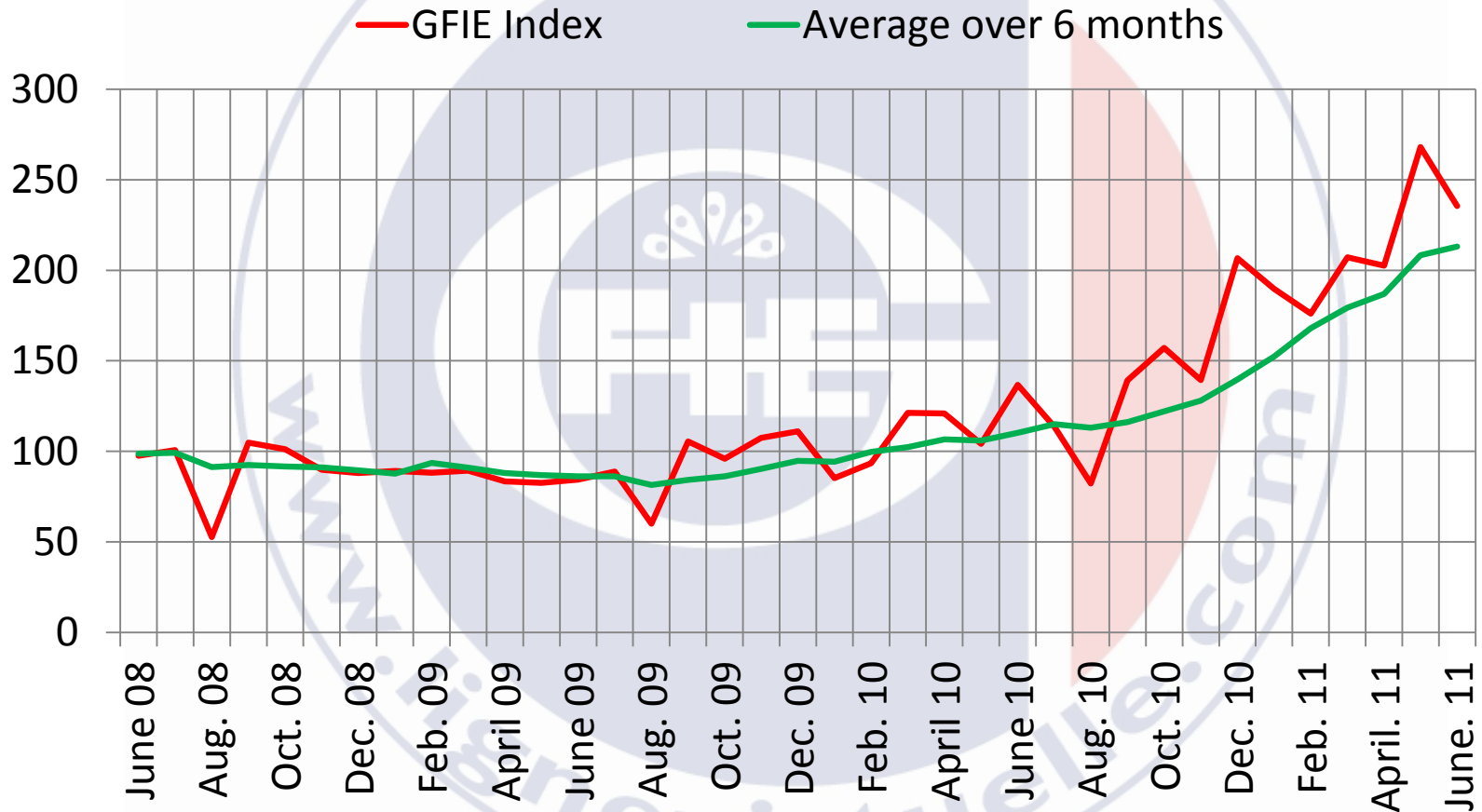
**Trust Index**  
**5.36**

**Book bill**  
**0.979**

**Index variation over the month of June**  
**- 12.16%**

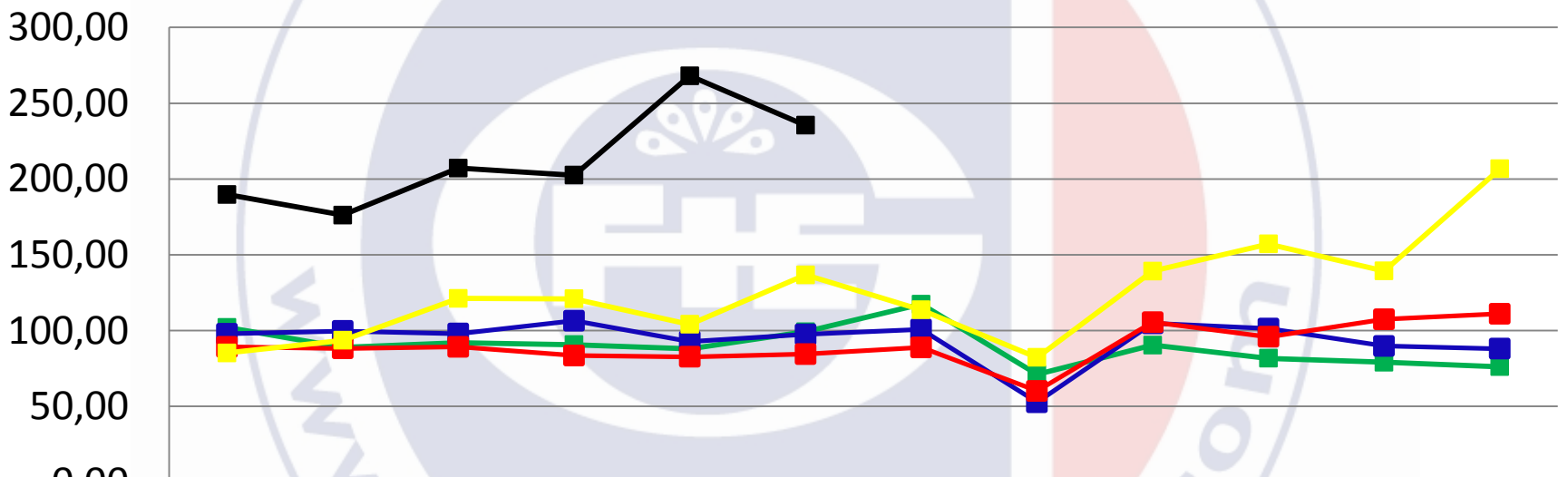
	July-10	Aug-10	Sept-10	Oct-10	Nov-10	Dec-10	Jan-11	Feb-11	March-11	April-11	May-11	June-11
<b>GFIE Index</b>	113,6	82,2	139,2	157,1	139,3	206,64	189,7	176,11	207,21	202,49	268,02	235,44
<b>Average over 6 months</b>	115,01	113,12	116,12	122,15	128,02	139,67	152,36	168,01	179,34	186,91	208,36	213,16

# GFIE index June 2011



# GFIE index June 2011

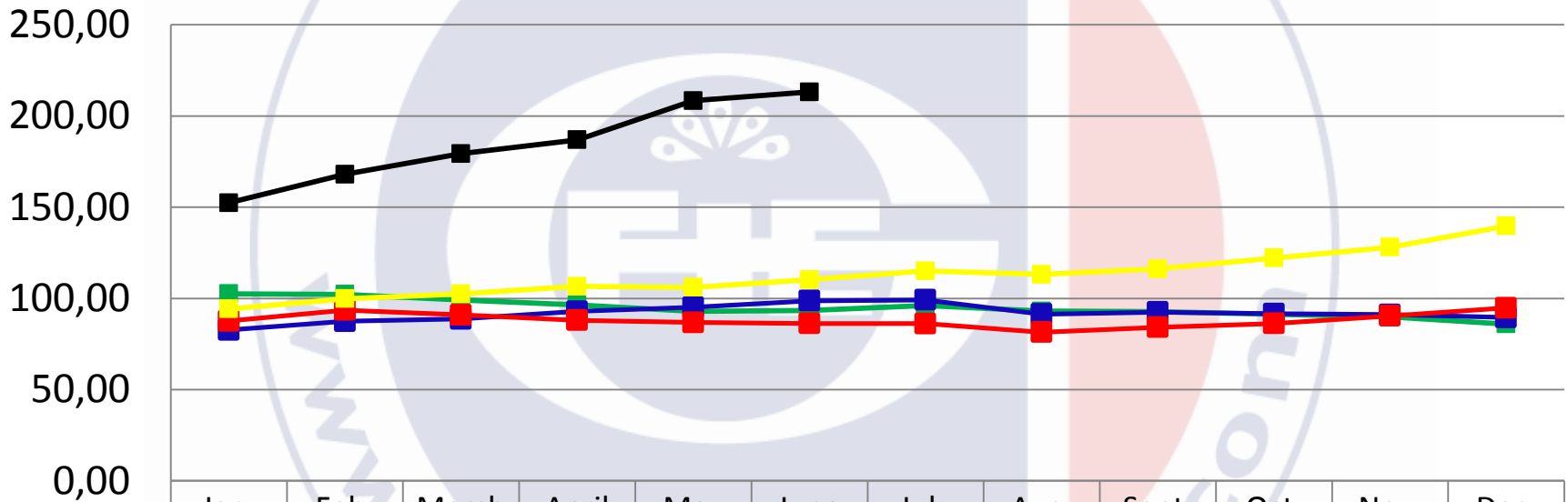
Evolution of the GFIE index between 2007 & 2011



	Jan.	Feb.	March	April	May	June	July	Aug.	Sept.	Oct.	Nov.	Dec.
2007	102,04	88,87	92,04	90,71	87,92	99,15	117,41	71,02	90,39	81,69	79,12	76,09
2008	97,85	99,70	97,96	106,50	92,66	97,50	100,70	52,70	104,78	101,25	89,80	88,02
2009	89,26	88,17	89,27	83,50	82,60	84,46	88,89	60,12	105,49	95,87	107,40	111,10
2010	85,23	93,54	121,23	120,90	104,10	136,70	113,60	82,20	139,20	157,10	139,30	206,64
2011	189,70	176,11	207,21	202,49	268,02	235,44						

# GFIE index June 2011

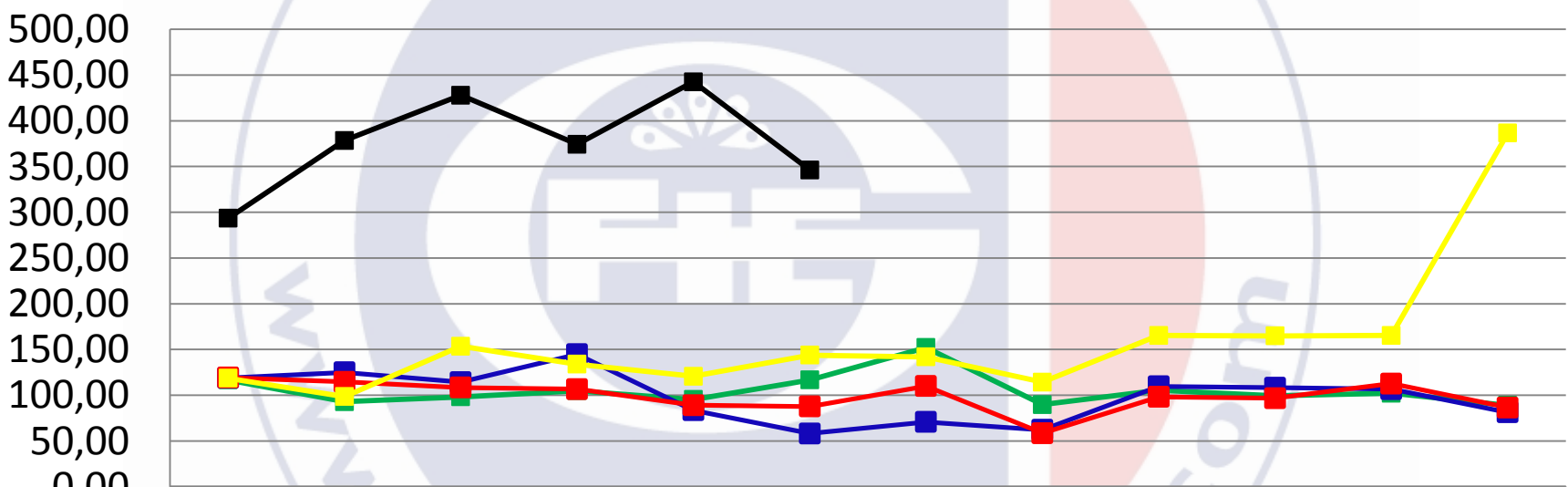
Evolution of the average over 6 months between 2007 & 2011



	Jan.	Feb.	March	April	May	June	July	Aug.	Sept.	Oct.	Nov.	Dec.
■ 2007	102,50	102,20	99,17	96,44	92,97	93,46	96,02	93,04	92,77	91,26	89,80	85,95
■ 2008	82,69	87,47	88,74	92,87	95,13	98,70	99,17	91,34	92,47	91,60	91,12	89,54
■ 2009	87,64	93,55	90,96	88,00	86,80	86,21	86,15	81,47	84,18	86,24	90,37	94,81
■ 2010	94,20	99,77	102,40	106,57	106,02	110,28	115,01	113,12	116,12	122,15	128,02	139,67
■ 2011	152,36	168,01	179,34	186,91	208,36	213,16						

# GFIE index June 2011

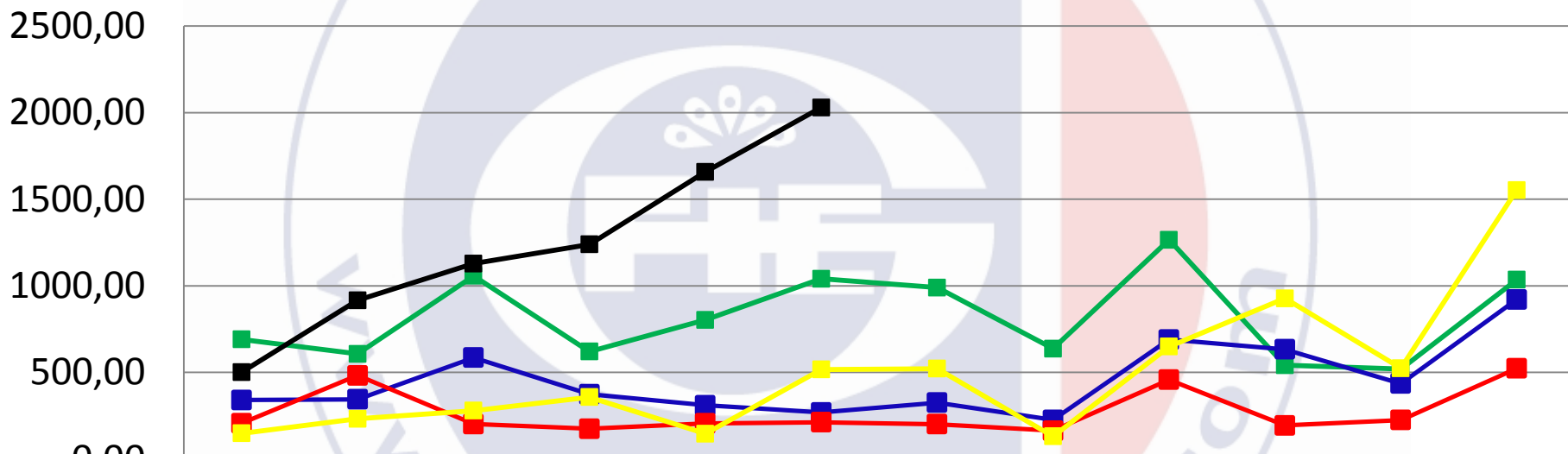
Electronic goods index



	Jan.	Feb.	March	April	May	June	July	Aug.	Sept.	Oct.	Nov.	Dec.
2007	116,67	92,93	98,16	104,80	95,32	116,67	152,12	89,62	105,53	99,23	102,19	88,92
2008	118,86	124,98	114,33	144,72	83,52	58,08	70,74	62,04	109,65	108,12	106,61	81,28
2009	119,21	114,63	108,37	106,60	89,03	87,67	110,00	58,42	98,12	96,78	112,59	86,46
2010	118,60	98,40	153,51	133,88	120,61	143,77	141,82	114,27	165,36	164,78	165,24	386,59
2011	293,50	378,44	427,96	374,30	442,53	346,23						

# GFIE index June 2011

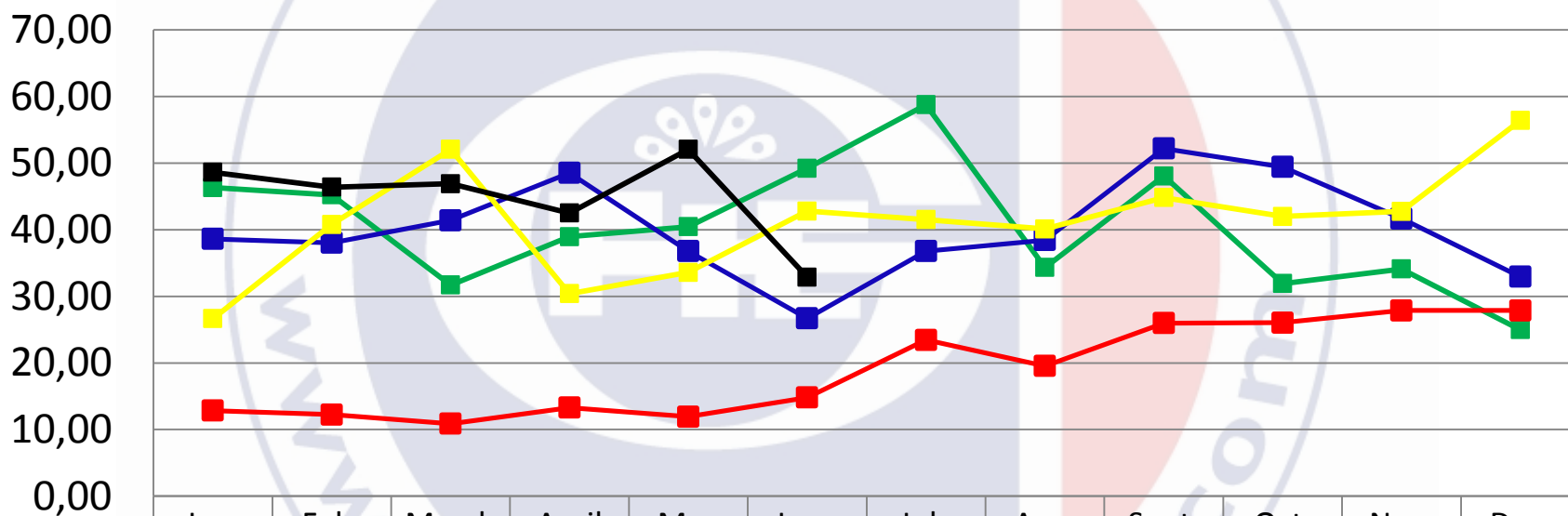
**Machines, products and services to production index**



	Jan.	Feb.	March	April	May	June	July	Aug.	Sept.	Oct.	Nov.	Dec.
2007	689,83	606,39	1056,73	619,72	802,40	1040,44	988,97	636,44	1265,34	540,88	519,25	1034,61
2008	339,57	343,86	584,98	373,20	309,98	268,32	325,01	224,78	689,39	633,02	434,58	920,57
2009	205,66	481,87	201,23	173,66	205,11	211,62	200,49	162,88	457,35	193,35	224,16	522,48
2010	147,52	231,75	278,88	356,81	144,97	516,57	521,23	130,10	648,89	927,18	523,33	1552,84
2011	500,98	916,13	1128,12	1238,90	1657,60	2029,22						

# GFIE index June 2011

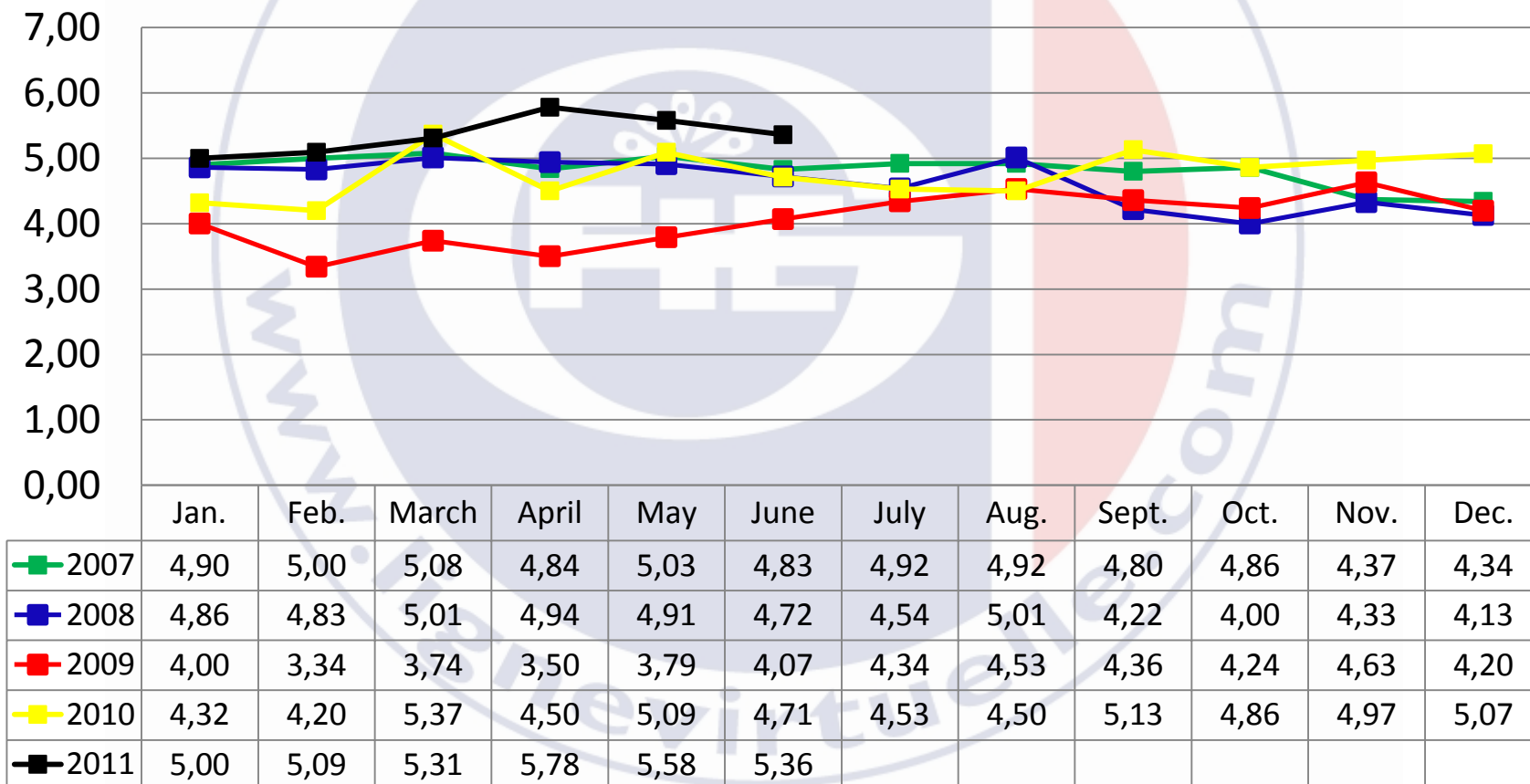
**Export index**



	Jan.	Feb.	March	April	May	June	July	Aug.	Sept.	Oct.	Nov.	Dec.
2007	46,33	45,23	31,69	38,96	40,46	49,24	58,77	34,34	48,08	31,92	34,11	24,99
2008	38,63	38,05	41,42	48,54	36,80	26,69	36,80	38,44	52,20	49,43	41,69	32,96
2009	12,85	12,25	10,89	13,30	11,92	14,81	23,45	19,55	25,99	26,04	27,88	27,87
2010	26,64	40,80	52,06	30,40	33,59	42,81	41,52	40,12	44,84	42,00	42,76	56,41
2011	48,62	46,41	46,92	42,51	52,07	32,89						

# GFIE index June 2011

Trust index



# GFIE index June 2011

**Book Bill**

